



RESUMO GERAL DE DEZEMBRO 2019

NAVIOS OPERADOS	Jan	Fev	Mar	Abr	Mai	Jun	Jul	Ago	Set	Out	Nov	Dez	2019	2018	Δ%
Full Container LC	73	67	67	75	74	77	82	77	79	86	69	83	909	833	9
Full Container CB	4	2	5	4	5	4	4	5	4	5	4	4	50	48	4
Roll-On-Roll-Off	0	1	3	0	2	3	2	1	2	0	1	3	18	13	38
Carga Geral	2	3	2	2	6	5	2	6	3	3	1	6	41	43	-5
Granel Líquido	1	1	1	1	1	1	1	0	1	0	1	1	10	7	43
Reefer	1	1	0	0	0	0	0	0	0	0	0	0	2	15	-87
Passageiros	1	2	0	0	0	0	0	0	0	1	0	4	8	3	167
Outros	3	3	1	6	3	0	0	3	2	1	0	8	30	34	-12
Total*	85	80	79	88	91	90	91	92	91	96	76	109	1.068	996	7

* Total de navios operados pelo critério de DESATRACAÇÃO.

MOVIMENTAÇÃO TOTAL DE CARGAS* (t)							
MÊS	EXPORTAÇÃO		IMPORTAÇÃO		TOTAL		
	2019	2018	2019	2018	2019	2018	Δ%
Jan	550.693	545.258	454.228	398.373	1.004.921	943.631	6
Fev	626.427	597.687	440.958	384.226	1.067.385	981.913	9
Mar	616.643	665.553	428.555	402.187	1.045.198	1.067.740	-2
Abr	715.119	677.010	458.636	430.399	1.173.755	1.107.409	6
Mai	712.501	609.969	436.137	378.396	1.148.638	988.365	16
Jun	683.007	593.536	535.405	409.022	1.218.412	1.002.558	22
Jul	650.796	672.992	432.976	450.734	1.083.772	1.123.726	-4
Ago	665.644	691.850	482.014	471.299	1.147.658	1.163.149	-1
Set	678.206	635.919	495.068	455.591	1.173.274	1.091.510	7
Out	693.891	650.139	551.331	441.994	1.245.222	1.092.133	14
Nov	730.027	709.758	404.162	456.764	1.134.189	1.166.522	-3
Dez	797.685	652.140	484.639	441.474	1.282.324	1.093.614	17
TOT	8.120.639	7.701.811	5.604.109	5.120.459	13.724.748	12.822.270	7

* Considerando toda a movimentação, seja de carga a granel, em contêiner ou contêineres vazios.

MOVIMENTAÇÃO DE CARGAS EM CONTÊINERES* (t)							
MÊS	EXPORTAÇÃO		IMPORTAÇÃO		TOTAL		
	2019	2018	2019	2018	2019	2018	Δ%
Jan	512.107	500.925	416.748	362.567	928.855	863.492	8
Fev	593.560	556.841	409.364	361.516	1.002.924	918.357	9
Mar	590.234	633.264	381.153	365.567	971.387	998.831	-3
Abr	685.018	619.526	410.877	378.251	1.095.895	997.777	10
Mai	666.408	564.005	373.854	326.882	1.040.262	890.887	17
Jun	644.263	532.969	456.046	360.636	1.100.309	893.605	23
Jul	616.878	627.792	383.820	401.235	1.000.698	1.029.027	-3
Ago	612.595	648.333	429.741	418.913	1.042.336	1.067.246	-2
Set	633.231	593.344	435.022	408.892	1.068.253	1.002.236	7
Out	648.585	618.307	520.998	388.395	1.169.583	1.006.702	16
Nov	695.058	676.331	372.988	413.488	1.068.046	1.089.819	-2
Dez	748.995	609.844	448.465	406.369	1.197.460	1.016.213	18
TOT	7.646.932	7.181.481	5.039.076	4.592.711	12.686.008	11.774.192	8

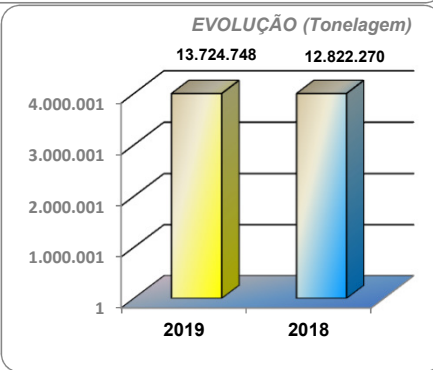
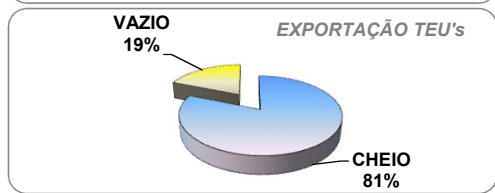
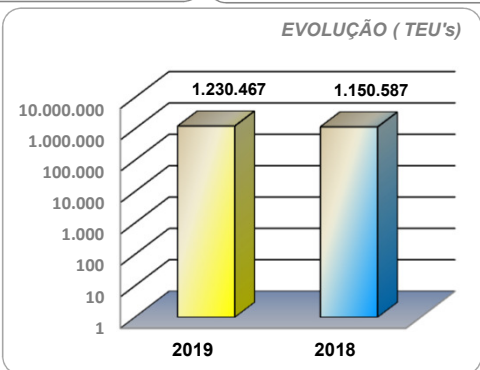
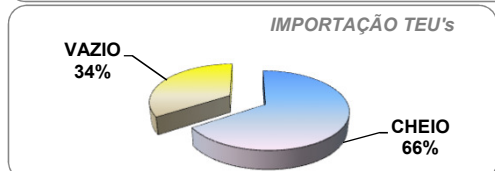
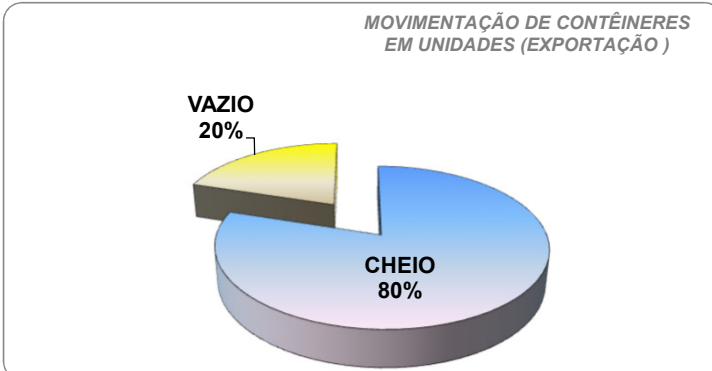
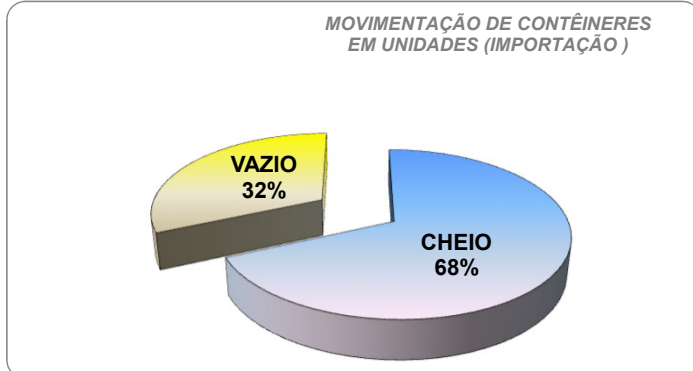
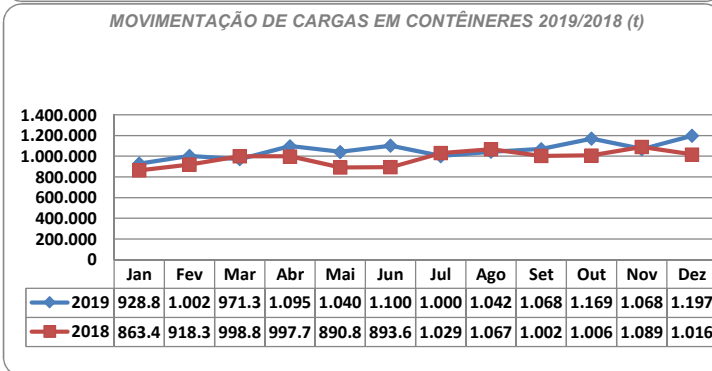
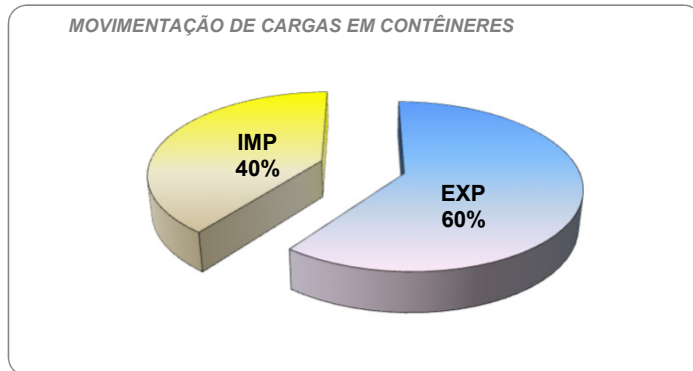
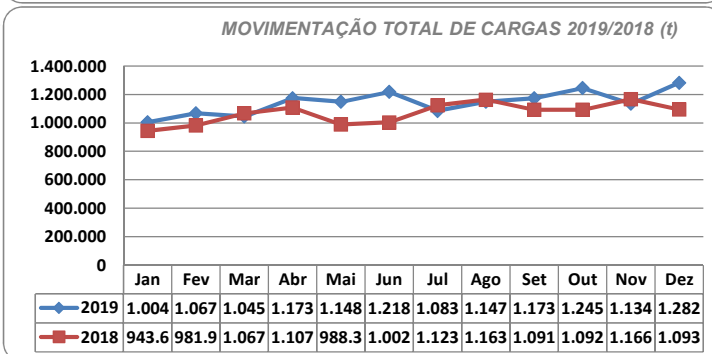
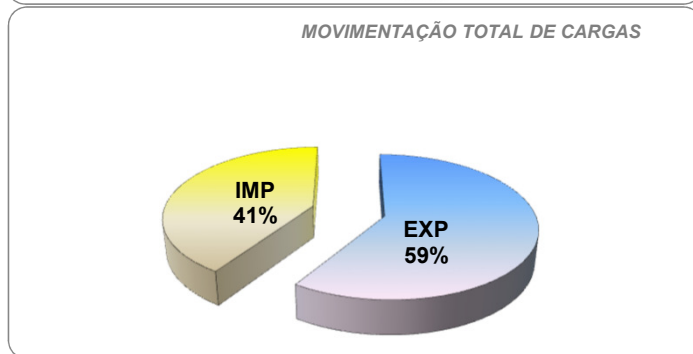
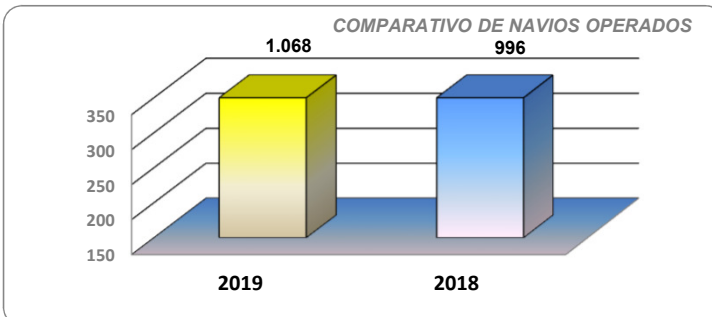
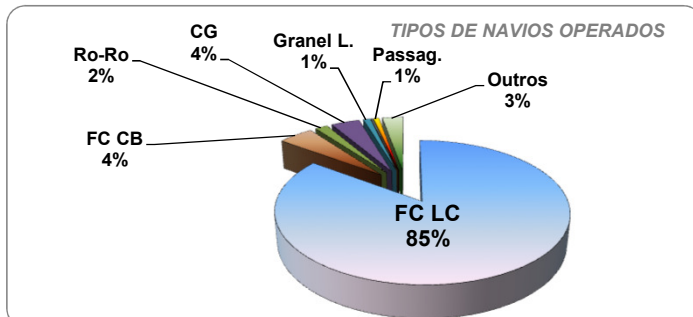
* Considerando somente a movimentação dos contêineres cheios e suas respectivas taras.

MOVIMENTAÇÃO DE CONTÊINERES (UNIDADES)										
MÊS	EXPORTAÇÃO		IMPORTAÇÃO		UNIDADES	TOTAL MÊS		TOTAL ANO		
	CHEIO	VAZIO	CHEIO	VAZIO		CHEIO	VAZIO	2019	2018	Δ%
Jan	18.638	6.763	18.671	7.907		37.309	14.670	51.979	48.322	8
Fev	21.530	5.865	18.319	6.573		39.849	12.438	52.287	46.195	13
Mar	21.484	4.709	17.431	9.193		38.915	13.902	52.817	52.836	0,0
Abr	24.654	5.247	18.394	10.701		43.048	15.948	58.996	55.747	6
Mai	24.583	5.622	16.955	10.638		41.538	16.260	57.798	53.736	8
Jun	23.931	4.005	20.840	12.957		44.771	16.962	61.733	53.242	16
Jul	22.724	6.912	17.601	7.762		40.325	14.674	54.999	54.240	1
Ago	22.585	4.627	20.276	8.820		42.861	13.447	56.308	59.359	-5
Set	23.687	6.211	20.110	10.407		43.797	16.618	60.415	53.640	13
Out	24.454	5.701	23.993	7.812		48.447	13.513	61.960	55.208	12
Nov	25.532	6.933	16.558	6.301		42.090	13.234	55.324	57.458	-4
Dez	27.796	8.386	20.326	7.390		48.122	15.776	63.898	53.020	21
TOT	281.598	70.981	229.474	106.461		511.072	177.442	688.514	643.003	7

MOVIMENTAÇÃO DE CONTÊINERES (TEU'S)										
MÊS	EXPORTAÇÃO		IMPORTAÇÃO		TEU'S	TOTAL MÊS		TOTAL ANO		
	CHEIO	VAZIO	CHEIO	VAZIO		CHEIO	VAZIO	2019	2018	Δ%
Jan	34.154	11.066	31.729	14.940		65.883	26.006	91.889	85.341	8
Fev	38.826	9.515	31.295	12.434		70.121	21.949	92.070	81.961	12
Mar	39.217	7.931	29.858	17.558		69.075	25.489	94.564	94.522	0
Abr	44.883	8.351	31.251	20.593		76.134	28.944	105.078	98.779	6
Mai	44.932	8.947	29.160	20.518		74.092	29.465	103.557	95.810	8
Jun	43.561	6.733	35.279	25.379		78.840	32.112	110.952	95.646	16
Jul	41.484	11.071	30.459	15.033		71.943	26.104	98.047	97.142	1
Ago	41.385	7.742	35.127	16.997		76.512	24.739	101.251	107.779	-6
Set	42.822	10.999	34.518	20.377		77.340	31.376	108.716	97.035	12
Out	44.275	9.417	41.489	14.891		85.764	24.308	110.072	99.779	10
Nov	46.499	12.238	28.646	12.317		75.145	24.555	99.700	102.469	-3
Dez	50.540	15.025	34.971	14.035		85.511	29.060	114.571	94.324	21
TOT	512.578	119.035	393.782	205.072		906.360	324.107	1.230.467	1.150.587	7



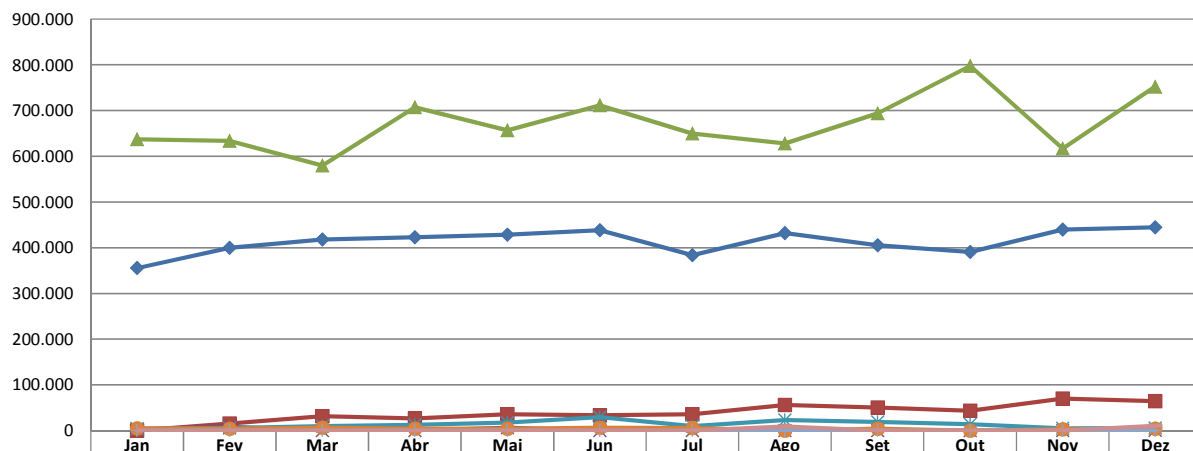
RESUMO GERAL DE DEZEMBRO 2019





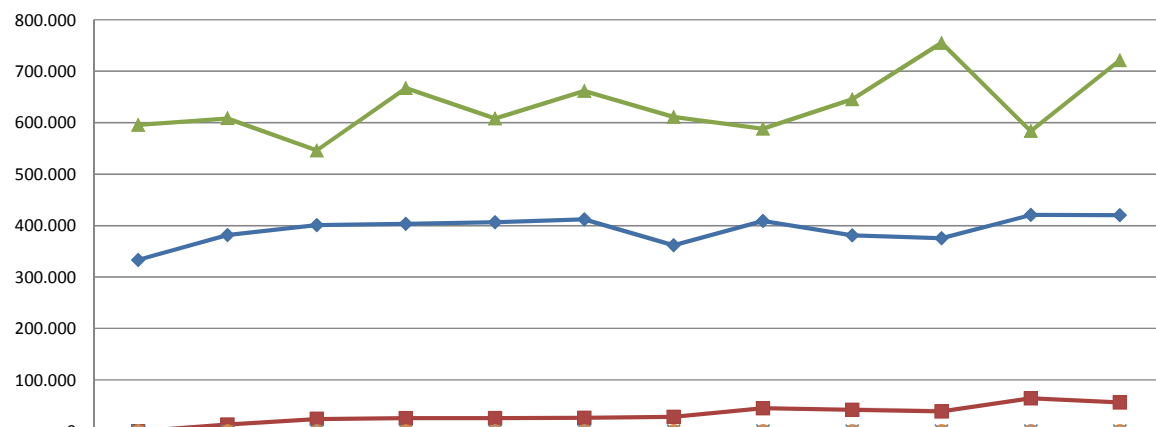
RESUMO GERAL DE DEZEMBRO 2019

MOVIMENTAÇÃO TOTAL DE CARGAS / TERMINAIS (t)



	Jan	Fev	Mar	Abr	Mai	Jun	Jul	Ago	Set	Out	Nov	Dez
APM TERMINALS	355.365	399.846	417.750	422.992	428.482	438.352	383.700	431.738	405.368	390.423	439.570	444.767
CAIS COMERCIAL	0	15.758	31.595	26.874	35.622	33.407	35.595	55.883	50.786	43.322	70.157	64.650
PORTONAVE	637.187	633.974	579.789	707.165	656.747	711.147	649.449	628.237	694.036	797.450	616.665	752.299
BRASKARNE	3.097	8.049	0	0	6.243	0	0	0	0	0	0	477
TEPORTI	4.272	5.758	10.064	12.724	17.544	29.506	9.672	22.903	19.084	14.027	4.797	5.436
POLY TERMINAIS	5.000	4.000	6.000	4.000	4.000	6.000	5.356	0	4.000	0	3.000	4.000
TROCADEIRO	0	0	0	0	0	0	0	0	0	0	0	0
TERMINAL BARRA DO RIO	0	0	0	0	0	0	0	8.897	0	0	0	10.695

MOVIMENTAÇÃO DE CARGAS EM CONTÊINERES / TERMINAIS (t)



	Jan	Fev	Mar	Abr	Mai	Jun	Jul	Ago	Set	Out	Nov	Dez
APM TERMINALS	333.318	381.480	401.141	403.453	406.503	412.042	361.460	408.987	380.900	375.480	420.485	420.063
CAIS COMERCIAL	0	12.999	24.096	25.414	25.595	26.443	28.234	45.019	42.023	38.863	64.000	56.054
PORTONAVE	595.537	608.445	546.150	667.028	608.164	661.824	611.004	588.330	645.330	755.240	583.561	721.343
BRASKARNE	0	0	0	0	0	0	0	0	0	0	0	0
TEPORTI	0	0	0	0	0	0	0	0	0	0	0	0
POLY TERMINAIS	0	0	0	0	0	0	0	0	0	0	0	0
TROCADEIRO	0	0	0	0	0	0	0	0	0	0	0	0
TERMINAL BARRA DO RIO	0	0	0	0	0	0	0	0	0	0	0	0



RESUMO GERAL COMPARATIVO 2018 a 2019

NAVIOS OPERADOS	Janeiro a Dezembro de 2018	Janeiro a Dezembro de 2019	Δ%
Full Container LC	833	909	9
Full Container CB	48	50	4
Roll-On-Roll-Off	13	18	38
Carga Geral	43	41	-5
Granel Líquido	7	10	43
Reefer	15	2	-87
Passageiros	3	8	167
Outros	34	30	-12
Total*	996	1.068	7

* Total de navios operados pelo critério de DESATRACAÇÃO.

MÊS	MOVIMENTAÇÃO TOTAL DE CARGAS* (t)							Δ%
	EXPORTAÇÃO		IMPORTAÇÃO		TOTAL			
	2018	2019	2018	2019	2018	2019		
Jan	545.258	550.693	398.373	454.228	943.631	1.004.921	6	
Fev	597.687	626.427	384.226	440.958	981.913	1.067.385	9	
Mar	665.553	616.643	402.187	428.555	1.067.740	1.045.198	-2	
Abr	677.010	715.119	430.399	458.636	1.107.409	1.173.755	6	
Mai	609.969	712.501	378.396	436.137	988.365	1.148.638	16	
Jun	593.536	683.007	409.022	535.405	1.002.558	1.218.412	22	
Jul	672.992	650.796	450.734	432.976	1.123.726	1.083.772	-4	
Ago	691.850	665.644	471.299	482.014	1.163.149	1.147.658	-1	
Set	635.919	678.206	455.591	495.068	1.091.510	1.173.274	7	
Out	650.139	693.891	441.994	551.331	1.092.133	1.245.222	14	
Nov	709.758	730.027	456.764	404.162	1.166.522	1.134.189	-3	
Dez	652.140	797.685	441.474	484.639	1.093.614	1.282.324	17	
TOT	7.701.811	8.120.639	5.120.459	5.604.109	12.822.270	13.724.748	7	

* Considerando toda a movimentação, seja de carga a granel, em contêiner ou contêineres vazios.

MÊS	MOVIMENTAÇÃO DE CARGAS EM CONTÊINERES* (t)							Δ%
	EXPORTAÇÃO		IMPORTAÇÃO		TOTAL			
	2018	2019	2018	2019	2018	2019		
Jan	500.925	512.107	362.567	416.748	863.492	928.855	8	
Fev	556.841	593.560	361.516	409.364	918.357	1.002.924	9	
Mar	633.264	590.235	365.567	381.153	998.831	971.388	-3	
Abr	619.526	685.018	378.251	410.877	997.777	1.095.895	10	
Mai	564.005	666.408	326.882	373.854	890.887	1.040.262	17	
Jun	532.969	644.263	360.636	456.046	893.605	1.100.309	23	
Jul	627.792	616.878	401.235	383.820	1.029.027	1.000.698	-3	
Ago	648.333	612.595	418.913	429.741	1.067.246	1.042.336	-2	
Set	593.344	633.231	408.892	435.022	1.002.236	1.068.253	7	
Out	618.307	648.585	388.395	520.998	1.006.702	1.169.583	16	
Nov	676.331	695.058	413.488	372.988	1.089.819	1.068.046	-2	
Dez	609.844	748.995	406.369	448.465	1.016.213	1.197.460	18	
TOT	7.181.481	7.646.933	4.592.711	5.039.076	11.774.192	12.686.009	8	

* Considerando somente a movimentação dos contêineres cheios e suas respectivas taras.

MÊS	MOVIMENTAÇÃO DE CONTÊINERES (UNIDADES)										Δ%				
	2018		2018				2019								
	CHEIO	VAZIO	CHEIO	VAZIO	TOTAL MÊS	TOTAL ANO	CHEIO	VAZIO	TOTAL MÊS	TOTAL ANO					
Jan	18.589	4.414	17.017	8.302	35.606	12.716	48.322	18.638	6.763	18.671	7.907	37.309	14.670	51.979	8
Fev	20.301	3.710	16.723	5.461	37.024	9.171	46.195	21.530	5.865	18.319	6.573	39.849	12.438	52.287	13
Mar	23.077	3.907	17.287	8.565	40.364	12.472	52.836	21.484	4.709	17.431	9.193	38.915	13.902	52.817	0
Abr	22.718	4.126	17.213	11.690	39.931	15.816	55.747	24.634	5.267	18.328	10.767	42.962	16.034	58.996	6
Mai	20.797	6.054	14.735	12.150	35.532	18.204	53.736	24.583	5.622	16.955	10.638	41.538	16.260	57.798	8
Jun	19.873	6.223	16.495	10.651	36.368	16.874	53.242	23.931	4.005	20.840	12.957	44.771	16.962	61.733	16
Jul	23.158	4.054	17.940	9.088	41.098	13.142	54.240	22.724	6.912	17.601	7.762	40.325	14.674	54.999	1
Ago	23.870	4.183	19.088	12.218	42.958	16.401	59.359	22.585	4.627	20.276	8.820	42.861	13.447	56.308	-5
Set	21.752	4.123	18.376	9.389	40.128	13.512	53.640	23.687	6.211	20.110	10.407	43.797	16.618	60.415	13
Out	22.287	4.482	17.550	10.889	39.837	15.371	55.208	24.454	5.701	23.993	7.812	48.447	13.513	61.960	12
Nov	24.831	5.187	18.325	9.115	43.156	14.302	57.458	25.532	6.933	16.558	6.301	42.090	13.234	55.324	-4
Dez	22.345	5.573	18.173	6.943	40.518	12.516	53.034	27.796	8.386	20.326	7.390	48.122	15.776	63.898	20
TOT	263.598	56.036	208.922	114.461	472.520	170.497	643.017	281.578	71.001	229.408	106.527	510.986	177.528	688.514	7

MÊS	MOVIMENTAÇÃO DE CONTÊINERES (TEU'S)										Δ%				
	2018		2018				2019								
	CHEIO	VAZIO	CHEIO	VAZIO	TOTAL MÊS	TOTAL ANO	CHEIO	VAZIO	TOTAL MÊS	TOTAL ANO					
Jan	33.627	6.900	29.084	15.730	62.711	22.630	85.341	34.154	11.066	31.729	14.940	65.883	26.006	91.889	8
Fev	36.961	6.153	28.401	10.446	65.362	16.599	81.961	38.826	9.515	31.295	12.434	70.121	21.949	92.070	12
Mar	42.540	5.860	29.716	16.406	72.256	22.266	94.522	39.217	7.931	29.858	17.558	69.075	25.489	94.564	0
Abr	41.118	6.264	28.619	22.778	69.737	29.042	98.779	44.843	8.391	31.119	20.725	75.962	29.116	105.078	6
Mai	37.968	9.784	25.053	23.005	63.021	32.789	95.810	44.932	8.947	29.160	20.518	74.092	29.465	103.557	8
Jun	36.676	10.213	28.159	20.598	64.835	30.811	95.646	43.561	6.733	35.279	25.379	78.840	32.112	110.952	16
Jul	42.350	6.511	30.626	17.655	72.976	24.166	97.142	41.484	11.071	30.459	15.033	71.943	26.104	98.047	1
Ago	43.997	7.035	33.199	23.548	77.196	30.583	107.779	41.385	7.742	35.127	16.997	76.512	24.739	101.251	-6
Set	39.980	6.859	31.889	18.307	71.869	25.166	97.035	42.822	10.999	34.518	20.377	77.340	31.376	108.716	12
Out	40.884	7.402	30.436	21.057	71.320	28.459	99.779	44.275	9.417	41.489	14.891	85.764	24.308	110.072	10
Nov	45.442	8.117	31.486	17.424	76.928	25.541	102.469	46.499	12.238	28.646	12.317	75.145	24.555	99.700	-3
Dez	40.620	8.989	31.251	13.464	71.871	22.453	94.324	50.540	15.025	34.971	14.035	85.511	29.060	114.571	21
TOT	482.163	90.087	357.919	220.418	840.082	310.505	1.150.587	512.538	119.075	393.650	205.204	906.188	324.279	1.230.467	7